

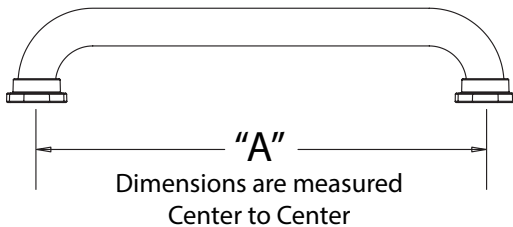
# How To Order

## 1" Diameter Grab Bars

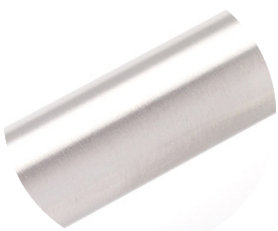
**Applications:** *Architectural | Commercial | Institutional | Residential*

**Configurations:** **01, 07, 08, 09, 12, 13, 15, 16, 25**

Configuration	Diameter	Material	Dimension(s)	Grip	Flange	Color
<b>01</b> - Straight Bar <b>07/08</b> - Bar with Post <b>09</b> - 90° Bar <b>12/13</b> - 120° Bar <b>15/16</b> - Wall to Floor <b>25</b> - Inside Corner	1 1" diameter	<b>1</b> Chrome <b>2</b> Stainless Steel	<i>*Dimensions in inches, denote each length. See Config. Guide for stock dimensions.</i>	<b>S</b> Smooth <b>P</b> Peened <b>K</b> Knurled	<b>L</b> Low Profile <b>H</b> High Profile <b>T</b> Twist Lock	<b>-01</b> White <b>-02</b> Almond  <i>* For powder coating only</i>



### Grips:



Smooth



Peened



Knurled

### Flanges:



Low Profile



High Profile



Twist Lock