



521 Lawrence Rd NE
Canton, OH 44704

Wall to Floor Safety Rails with Outrigger with Concealed Flanges

Architectural, Commercial, Institutional

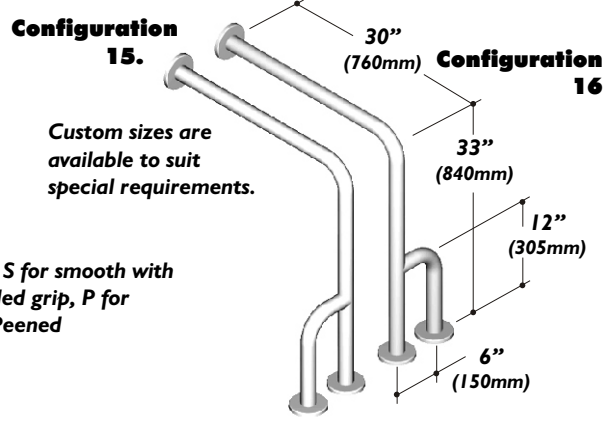
"Twist-Lock" Concealed Flange

(see technical page for detail)

SPECIFICATION: (Stainless Steel)
Wall to Floor Safety Rail with Outrigger and Twist-Lock concealed flanges. Manufactured by ELCOMA from 18 gauge, type 304, satin finished, stainless steel tubing. 14 gauge stainless steel mounting flange shall be Heliarc welded to the tube to form a single structural unit. Rail shall comply with all applicable federal and local building and safety codes.

- 1.25" (32 mm) rail dia. Model # 15-223330ST
 - 1.50" (38 mm) rail dia. Model # 15-523330ST
- For opposite orientation substitute # 16

(substitute S for smooth with K for Knurled grip, P for Peened)



SPECIFICATION: (Painted Stainless Steel)

Wall to Floor Safety Rail with Outrigger and Twist-Lock concealed flange. Manufactured by ELCOMA from 18 gauge, Type 304, stainless steel tubing. 14 gauge stainless steel mounting flange shall be Heliarc welded to the tube to form a single structural unit. Rail shall have a polyester powder coating finish. It shall comply with all applicable federal and local building and safety codes.

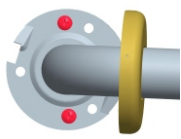
- 1.25" (32 mm) rail dia. White Model # 15-263330ST01 (substitute S for smooth with G for SHUR-GRIP)
 - 1.25" (32 mm) rail dia. Almond Model # 15-263330ST02
 - 1.50" (38 mm) rail dia. White Model # 15-563330ST01
 - 1.50" (38 mm) rail dia. Almond Model # 15-563330ST02
- For opposite orientation substitute # 16

Set Screw Concealed Flange (see technical page for detail)

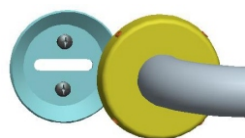
SPECIFICATION: (Stainless Steel)
Wall to Floor Safety Rail with Outrigger and Set-Screw concealed flange. Manufactured by ELCOMA from 18 gauge, Type 304, satin finished, stainless steel tubing. 12 gauge stainless steel mounting flange shall be Heliarc welded to the tube to form a single structural unit. Rail shall comply with all applicable federal and local building and safety codes.

- 1.25" (32 mm) rail dia. Model # 15-223330SC (substitute S for smooth with K for Knurled grip, for Peened grip, or G for SHUR-GRIP)
 - 1.50" (38 mm) rail dia. Model # 15-523330SC
- For opposite orientation substitute # 16

Twist-Lock "T" Concealed Flange



Set-Screw "C" Concealed Flange



SPECIFICATION: (Painted Stainless Steel)

Wall to Floor Safety Rail with Outrigger and Set-Screw concealed flange. Manufactured by ELCOMA from 18 gauge, type 304, stainless steel tubing. 12 gauge stainless steel mounting flange shall be Heliarc welded to the tube to form a single structural unit. Rail shall have a polyester powder coating finish. It shall comply with all applicable federal and local building and safety codes.

- 1.25" (32 mm) rail dia. White Model # 15-263330SC01 (substitute S for smooth with G for SHUR-GRIP)
 - 1.25" (32 mm) rail dia. Almond Model # 15-263330SC02
 - 1.50" (38 mm) rail dia. White Model # 15-563330SC01
 - 1.50" (38 mm) rail dia. Almond Model # 15-563330SC02
- For opposite orientation substitute # 16

SPECIFICATION: (Chrome Plated Steel)

Wall to Floor Safety Rail with Outrigger and Set-Screw concealed flange. Manufactured by ELCOMA from 18 gauge steel tubing. 12 gauge steel mounting flange shall be brazed to the tube to form a single structural unit prior to triple plating. Rail shall comply with all applicable federal and local building and safety codes.

- 1.25" (32 mm) rail dia. Model # 15-213330SC (substitute S for smooth with K for Knurled grip)
 - 1.50" (32 mm) rail dia. Model # 15-513330SC
- For opposite orientation substitute # 16

